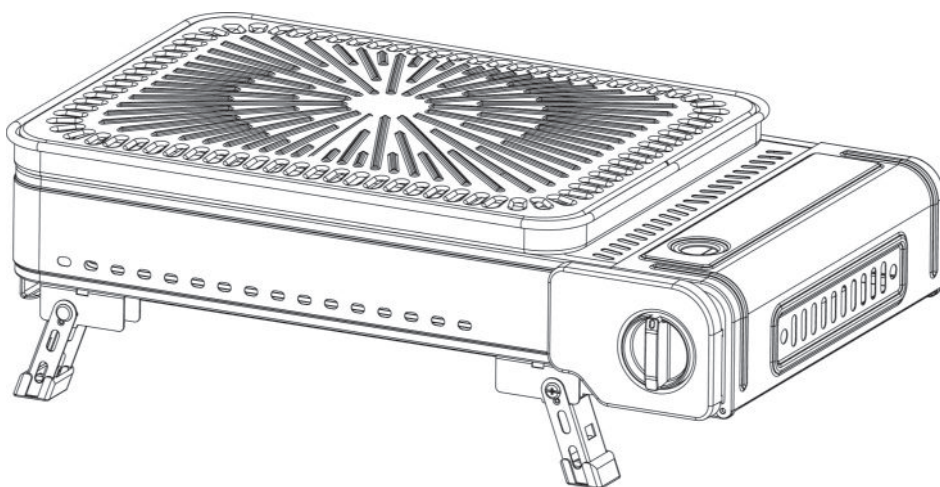




Assembly and Operating Instructions for Outback® U Grill Plus



Photographs are not to scale.
Specifications subject to change
without prior notice.

CE 2575 UK
CA 0359

IMPORTANT

Read these instructions for use carefully so as to familiarize yourself with the appliance before connecting it to its gas cartridge. Keep these instructions for future reference.



WARNINGS AND IMPORTANT INFORMATION

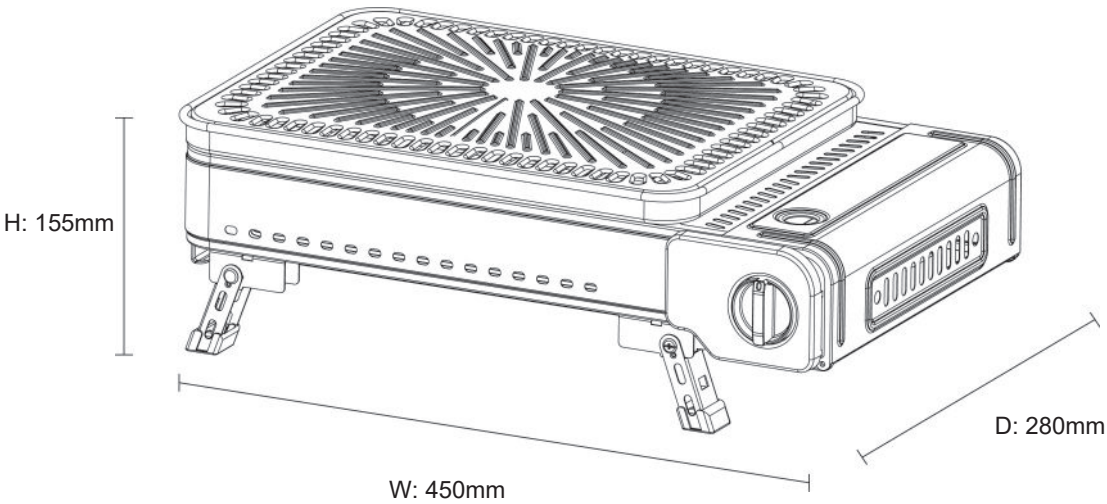


This appliance shall only be used with butane gas cartridge complying with EN417. We recommend using Outback® GC220 butane gas cartridge. It could be hazardous to attempt to fit other types of gas cartridges.

- ▲ Use outdoors only. This appliance should be used in a well ventilated location.
- ▲ Check that seals (between the appliance and the gas cartridge) are in place and in good condition before connecting to the gas cartridge.
- ▲ Do not use the appliance if it has damaged or worn seals.
- ▲ Do not use an appliance which is leaking, damaged or which does not operate properly.
- ▲ Do not modify the appliance.
- ▲ This appliance shall be operated on a horizontal surface non likely to impair its operation. Keep away from dry grass and sand. Do not use the grill on top of the plastic case.
- ▲ This appliance must be used away from flammable materials, and at least 600mm from adjacent surfaces (wall or ceilings).
- ▲ Gas cartridge shall be changed in a well ventilated location, preferably outside, away from any sources of ignition, such as naked flames, pilots, electric fires and away from other people.
- ▲ If there is a leak on your appliance (smell of gas), take it outside immediately into a well ventilated flame free location where the leak can be detected and stopped.
- ▲ If you wish to check for leaks on your appliance, do it outside. Do not try to detect leaks using a flame, use soapy water.
- ▲ CAUTION: accessible parts could become very hot. Keep young children away from the appliance.
- ▲ Always wear protective gloves when using the grill.
- ▲ Once lit, do not move the grill until it has completely cooled.
- ▲ This grill must not be left unattended while operating.
- ▲ Turn off the gas supply after use.
- ▲ Check that burners are extinguished before disconnecting the gas cartridge. Be careful the gas cartridge could be hot.
- ▲ Never cover this appliance until it has completely cooled.
- ▲ Failure to follow the manual's instructions could result in serious injury or damage.
- ▲ Modification of the grill may be dangerous, is not permitted and will nullify any warranty.
- ▲ If you have any queries regarding these instructions, contact your local dealer.

TECHNICAL DATE

Appliance Name	U Grill Plus
Model	SG936
Type of Gas	Butane
Appliance Category	Direct Pressue
Inject Size	0.6mm
Heat Input	2.0kW
Gas Consumption	146g/h



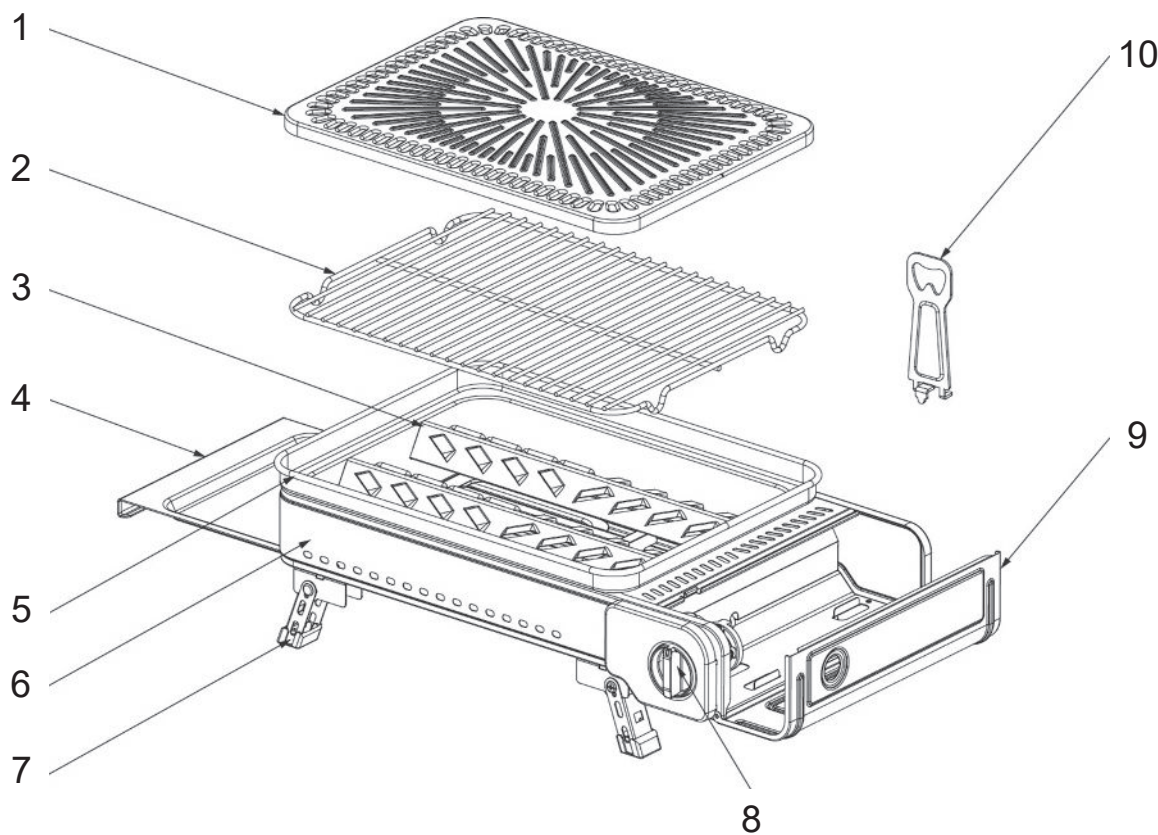
CE 2575
2575DP39516

UK
CA 0359
0359DP00140

▲ THIS APPLIANCE IS CLASSIFIED AS DIRECT PRESSURE.

▲ ONLY THE GAS TYPE AND GAS CATEGORY LISTED ABOVE SHOULD BE USED ON YOUR APPLIANCE.

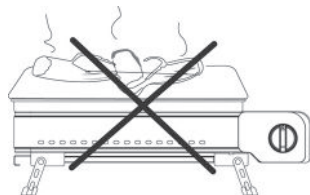
PARTS LIST



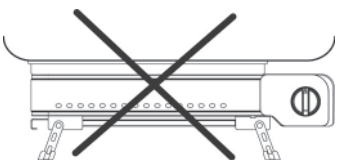
CODE	PART	QTY	CODE	PART	QTY
1	Grilling Plate	1	6	Firebox	1
2	Cooking Grill	1	7	Foldable Leg	4
3	Flame Diffuser Bar	2	8	Control Knob	1
4	Grease Tray	1	9	Gas Cartridge Bay Cover	1
5	Support Pan	1	10	Bottle Opener/Lifting Tool	1

SAFETY PRECAUTION

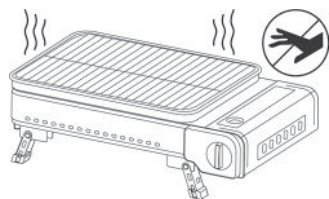
DO NOT use for any purpose other than cooking. It may cause a fire hazard to use the appliance for drying clothes, burning waste, etc.



DO NOT use any cooking vessel that covers the gas cartridge bay. This may cause overheating or exploding.



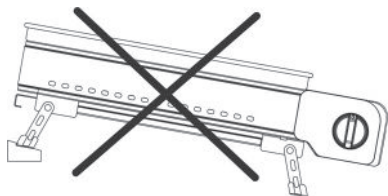
DO NOT touch the grilling plate or grill while it is hot.



DO NOT use in high wind condition. Otherwise, flames may be scattered or extinguished.



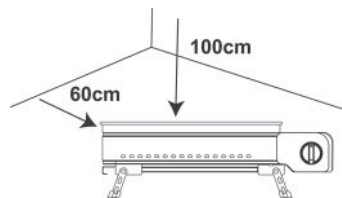
Use on a flat/stable surface. DO NOT move when in use.



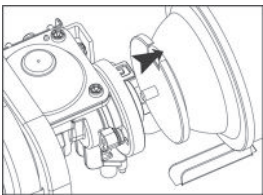
Use in a well ventilated location. DO NOT use in enclosed space.



This appliance must be used away from flammable materials, and at least 60cm from walls / 100cm from ceilings.



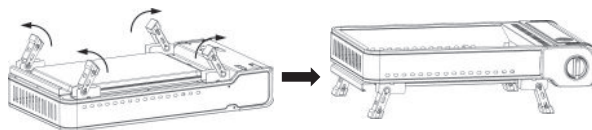
Fit the gas cartridge correctly by aligning the cartridge groove with guide tab. Ensure that there is no gap between the valve magnet and gas cartridge.



OPERATING INSTRUCTIONS

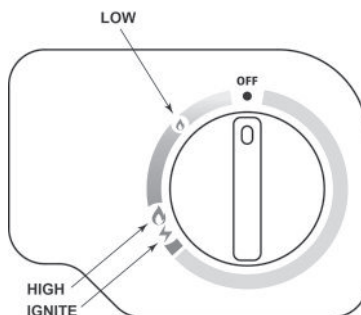
Unfold the legs

1. Unfold the legs before use. Ensure grill is placed on a flat level surface when in use. Never place grill on any flammable surface such as a wooden table or any surface that can be damaged by heat.

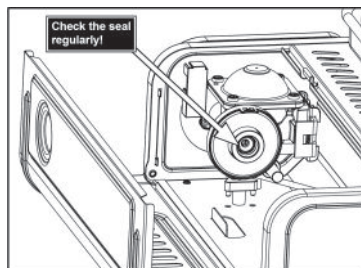


Install the gas cartridge

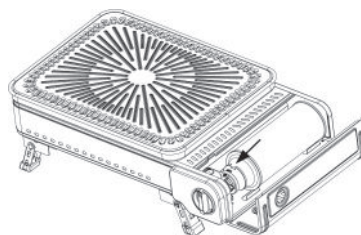
1. Ensure that the control knob is in OFF position. **NOTE: The gas cartridge cannot be installed in place if the control knob is not in OFF position.**



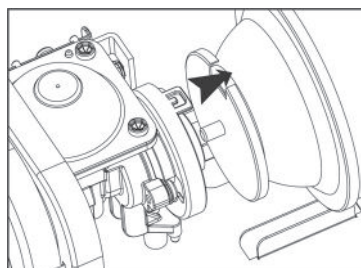
2. Open the gas cartridge bay cover, check the seal inside valve is in place and in good condition before connecting gas cartridge.



3. Put the gas cartridge onto the brackets inside of the gas cartridge bay. Align the gas outlet of cartridge with the gas inlet of valve; then push the gas cartridge inwards until it is attached onto the valve magnet.



Ensure the gas cartridge sits correctly into seal and the cartridge groove align with the guide tab.



IMPORTANT!

Check and ensure there is no gas leakage which could be smelt or heard before proceeding.

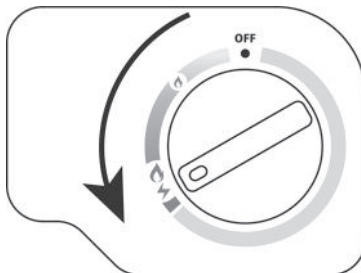
Pour about 200ml of water into grease tray and put in the right position before ignition.

OPERATING INSTRUCTIONS

Ignite the Grill

1. Turn the control knob anti-clockwise to IGNITE position until a click is heard.

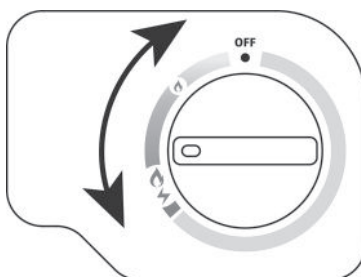
2. If burner fails to ignite, turn the control knob back to OFF position, and repeat the above step.



Heat control

1. The control knob can be rotated into anywhere between HIGH position and LOW position, as desired. Adjust knob to suitable position for best cooking result.

2. Anyway turn the control knob slowly from HIGH position to LOW position; this will help to avoid flame extinguishing.

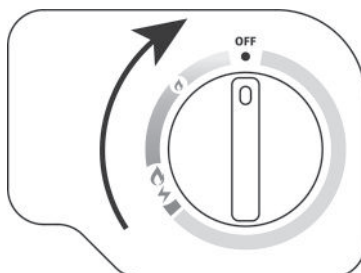


Turn off the Grill

1. Turn the control knob clockwise to OFF position. Ensure that the flame extinguished completely.

2. Pull the gas cartridge from valve magnet and take out.

Warning: always remove the gas cartridge when the grill is not in use. Store the gas cartridge in a safe and suitable place.



Change the gas cartridge

Warnings

- ▲ Change the gas cartridge outside and away from people. Perform in a well ventilated location, away from any sources of ignition, such as naked flames, pilots, electric fires, etc.
- ▲ Check the seals before connecting a new gas cartridge to the appliance.

1. Turn the control knob to OFF position. Check that burner is extinguished before disconnecting the gas cartridge. Be careful the gas cartridge could be hot.

2. Pull the gas cartridge from valve magnet and take out. DO NOT discard the empty gas cartridge at random.

3. Put the gas cartridge onto the brackets inside of the gas cartridge bay. Align the gas outlet of cartridge with the gas inlet of valve; then push the gas cartridge inwards until it is attached onto the valve magnet. Ensure the gas cartridge sits correctly into seal and the cartridge groove align with the guide tab.

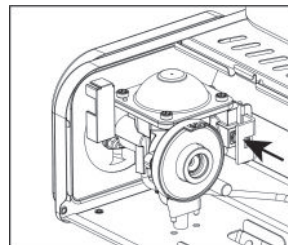
OPERATING INSTRUCTIONS

Pressure-sensitive safety device

If the appliance is used in a hot area such as in direct sunlight outdoors or near to some source of heat, the cartridge internal gas pressure will increase. If it become 4 – 6 bar, the built-in safety device (pressure sensor) will activate and cut off the gas flow to extinguish the flame.

In case the pressure sensitive safety device triggers it means that a critical pressure level is reached in the cartridge so the appliance must not be used before it has completely cool down. Do not bypass the pressure sensitive safety device.

- Remove the gas cartridge. Push in the nozzle of gas cartridge for a second to release pressure. Place the cartridge in a cool area for a while to lower the pressure to normal.
- Turn the control knob to HIGH position to release the excess gas from the valve. Then press the reset button as right figure shown.
- Re-ignite according to the operation instructions.



IMPORTANT NOTES

- This grill must not be left unattended when lit.
- As a safety precaution, once gas cartridge has been removed, turn the control knob to ignite several times. This will ensure that any gas left in pipe has been used.
- It is important to check grease tray regularly. Pay attention to the vaporization of water in grease tray when in long time use. Supplying suitable water as needed.
- Always empty and clean the grease tray after use. Failure to keep it clean, and excessive build up can result in a fat fire. This can be hazardous and severely damage your grill. **This is not covered by the terms of the warranty due to incorrect use.**
- This grill uses cartridges with Butane gas. Butane gas works best above +10° C. If the grill is used for a longer period of time, the gas cartridge will get cold. It is therefore recommended to have 2 gas cartridges available when grilling, and change cartridge when temperature / flame gets low. This is normal when using Butane gas.

LEAK TESTING

Always perform a leak test in a well-ventilated area.

WARNING: NEVER USE AN OPEN FLAME to test for leaks at any time.

Step 1 - Make a mixed solution (½ water and ½ liquid detergent / soap).

Step 2 - Confirm the control knob is in the OFF position.

Step 3 - Fit the gas cartridge correctly by aligning the cartridge groove with guide tab.

Step 4 - Apply the liquid to all gas system joints, including the connection between gas cartridge and regulator, the connection between regulator and gas tube.

Step 5 - Open the gas supply by turning the control knob anti-clockwise.

Step 6 - If bubbles form over any of the joints there is a leak, switch off the gas supply. Do not use the grill and contact your local distributor for assistance.

Always wipe the mixed solution from all joints and connections after leak testing.

CARE AND MAINTENANCE

WARNINGS:

- ▲ Do not modify the appliance. This may cause serious injury or death.
- ▲ Visually check the general aspect of this appliance and clean it if necessary, remove any contamination (sand, insects, grass, etc.)
- ▲ Check the good operation of the gas cartridge connection/disconnection system. If connection is blocked, please replace by an authorised person.

CAUTION:

- Remove the gas cartridge before cleaning.
- Never remove the safety device or gas components.

Cleaning and Maintenance

1. Grilling plate, Cooking Grill and Support Pan: Clean with hot soapy water. To remove any food residue, use a mild cream cleaner on a non-abrasive pad. Rinse well and dry thoroughly.
2. Flame Diffuser Bar: Remove any food residue with a soft plastic or wooden scraper or brass wire brush. Clean with hot soapy water and rinse well.
3. Firebox: Regularly remove excess grease or fat by using a cloth wrung out in hot soapy water and dry thoroughly. Excess fat and food debris can be removed from inside the body using a soft plastic or wooden scraper.
4. Burner: Burn off the food residue after cooking, and clean with a hard brush.
5. Grease tray: After every use, empty and clean the grease tray of any fat or food particles, using a plastic or wooden scraper if necessary. Wipe with a clean and dry cloth.

Storage

Ensure the grill is properly cooled and dry before covering or storing. **WARNING: The gas cartridge must be removed out from the grill.**

Store the grill in the supplied suitcase for protection against rain, dust and pollution.

CAUTION ON THE GAS CARTRIDGE

1. The gas cartridges should be placed safety away from any source of heat or ignition, and never under direct rays of sun. Store the gas cartridges in a cool and dry place where the ambient temperature is less than 40° C.
2. Gas cartridge shall be changed in a well ventilated location, preferably outside, away from any sources of ignition, such as naked flames, pilots, electric fires and away from other people.
3. Always place the protective cap on top of gas cartridge after using.
4. DO NOT subject the gas cartridge to impact or rough shake.
5. DO NOT store the gas cartridges in enclosed area.
6. DO NOT refill the empty cartridge.
7. DO NOT puncture or incinerate the empty cartridge.
8. DO NOT burn the empty cartridge.
9. Keep out of the reach of children.



TROUBLESHOOTING

PROBLEM	POSSIBLE CAUSE	SOLUTION
Burner will not light	Lack of fuel	Replace gas cartridge
	Gas cartridge is not located correctly	Reset correctly
	Obstruction in burner	Clean the burner
	Electrode dirty	Wipe off dirt
	Incorrect electrode gap	The electrode needs to be in line with the burner with a gap of 3 to 4mm between the tip of the electrode and the porthole on the burner. Realign the electrode as required
	Faulty ignition system	Request for inspection or service
Gas leakage	Gas cartridge is not located correctly	Reset correctly
	Faulty ignition system	Request for inspection or service
Low flame or uneven flame	Lack of fuel	Replace gas cartridge
	Obstruction in burner	Clean the burner
	Windy conditions	Use in a more sheltered position
	Low outdoor temperature	Butane is not very suitable in temperatures below 10°C
Flame goes out during use	Lack of fuel	Replace gas cartridge
	Obstruction in burner	Clean the burner
	Pressure-sensitive safety device activate	Cool down gas cartridge and reset the safety device

In the unlikely event that you experience problems with this barbecue, please fill in our warranty form at:

<http://www.outbackbarbecues.com/warranty-form>

One of our colleagues will be in contact with you shortly.

Made in China

Manufactured by TPA Industrial (DG) Co. Ltd.

No#16 Fengyuan Road, Dakan Village, Huangjiang

Town, Dongguan, Guangdong, China. 523768

For reference and correspondence, record your serial number here.
(See sticker on side of barbecue body.)

Serial No. _____

This number may be required when ordering spare parts or accessories. A part reference number may also be required where applicable.



V1-25