

A. Parts List

Quantities vary according to model purchased. Specifications subject to change without prior notice. For more details on hardware, please see 'Hardware Reference Diagram'.

| | CODE | PART | QTY | Outback® Trooper | Outback® Hunter | Outback® Ranger |
|----------|------|---------------------------------------|-----|------------------|-----------------|-----------------|
| HOOD | A1 | Hood (<i>Pre-Assembled to Body</i>) | 1 | ✓+▲ | ✓+▲ | ✓+▲ |
| | A2 | Heat Shield | 1 | ✓▲ | ✓▲ | ✓▲ |
| | A3 | Handle | 1 | ✓▲ | ✓▲ | ✓▲ |
| | A4 | Hinge Plate | 4 | ✓+ | ✓+ | ✓+ |
| | A5 | Gasket | 4 | ✓+ | ✓+ | ✓+ |
| | A6 | Hinge Assembly | 2 | ✓+ | ✓+ | ✓+ |
| | A7 | Hinge Bolt | 12 | ✓+ | ✓+ | ✓+ |
| | A8 | Hinge Nut | 12 | ✓+ | ✓+ | ✓+ |
| | A9 | Heat Gauge | 1 | ✓ | ✓ | ✓ |
| | A10 | Heat Gauge Nut | 2 | ✓ | ✓ | ✓ |
| | A11 | Warming Rack | 1 | ✓+▲ | ✓+▲ | ✓+▲ |
| BODY | B1 | Cooking Grill | ★ | 2▲ | 2▲ | 1▲ |
| | B2 | Reversible Cooking Griddle | ★ | N/A | 1▲ | 1▲ |
| | B3 | Lava Rock Basket | ★ | 2▲ | 2▲ | 1▲ |
| | B4 | Lava Rock (<i>Packed in Basket</i>) | ★ | 2+ | 2+ | 1+ |
| | B5 | Body (<i>see Part A1: Hood</i>) | 1 | ✓+▲ | ✓+▲ | ✓+▲ |
| | | | | | | |
| | B7 | Knob | ★ | 2+ | 3+ | 4+ |
| | B8 | Control Panel | 1 | ✓+▲ | ✓+▲ | ✓+▲ |
| | B9 | Drip Tray | 1 | ✓+▲ | ✓+▲ | ✓+▲ |
| | B10 | Drip Tray Handle | 1 | 1+ | 1+ | 1+ |
| | B11 | Hose and Hose Clip | 1 | ✓ | ✓ | ✓ |
| | B12 | Burner | ★ | 2+ | 3+ | 4+ |
| TROLLEY | C1 | Side Shelf | 2 | ✓ | ✓ | ✓ |
| | C2 | Short Leg Front | 1 | ✓ | ✓ | ✓ |
| | C3 | Short Leg Rear | 1 | ✓ | ✓ | ✓ |
| | C4 | Long Leg Front | 1 | ✓ | ✓ | ✓ |
| | C5 | Long Leg Rear | 1 | ✓ | ✓ | ✓ |
| | C6 | Screen | 1 | ✓▲ | ✓▲ | ✓▲ |
| | C7 | Trolley Base | 1 | ✓▲ | ✓▲ | ✓▲ |
| | C8 | Leg Endcap | 2 | ✓+ | ✓+ | ✓+ |
| | C9 | Axle | 1 | ✓ | ✓ | ✓ |
| | C10 | Wheel | 2 | ✓ | ✓ | ✓ |
| | C11 | Hubcap | 2 | ✓ | ✓ | ✓ |
| HARDWARE | D1 | Handle Nut | 2 | ✓ | ✓ | ✓ |
| | D2 | Handle Washer | 2 | ✓ | ✓ | ✓ |
| | D3 | Handle Spacer | 2 | ✓ | ✓ | ✓ |
| | D4 | Handle Bolt | 2 | ✓ | ✓ | ✓ |
| | D5 | | | | | |
| | D6 | | | | | |
| | D7 | Trolley Bolt | 24 | ✓ | ✓ | ✓ |
| | D8 | Body Support Bolt | 8 | ✓ | ✓ | ✓ |
| | D9 | Spacer | 8 | ✓ | ✓ | ✓ |
| | D10 | Wingnut | 8 | ✓ | ✓ | ✓ |
| | D11 | Washer | 2 | ✓ | ✓ | ✓ |
| | D12 | Locknut | 2 | ✓ | ✓ | ✓ |

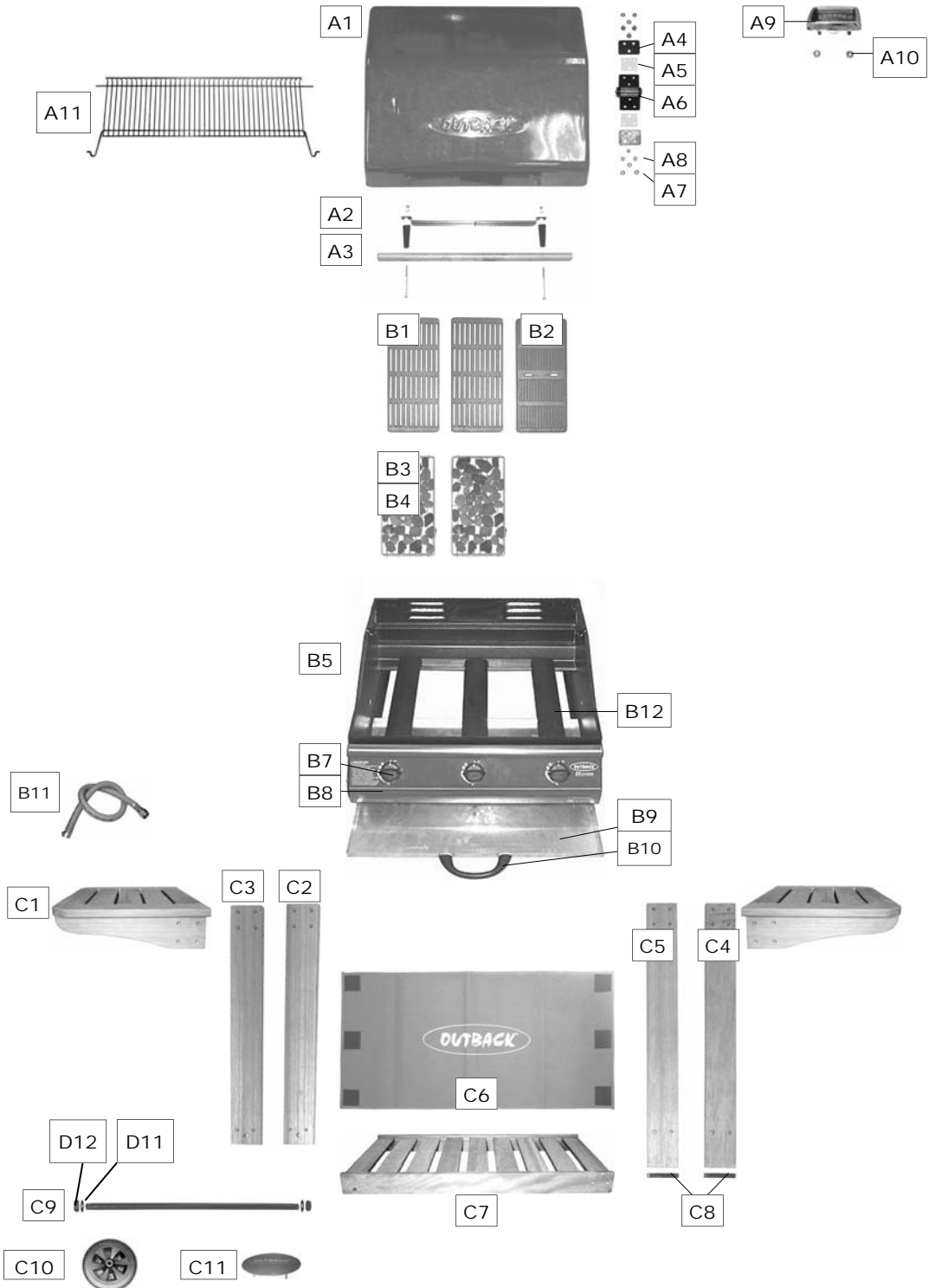
✚ Pre-Assembled Component

★ Quantity varies according to model purchased

▲ Appearance, size, and construction may differ according to model purchased

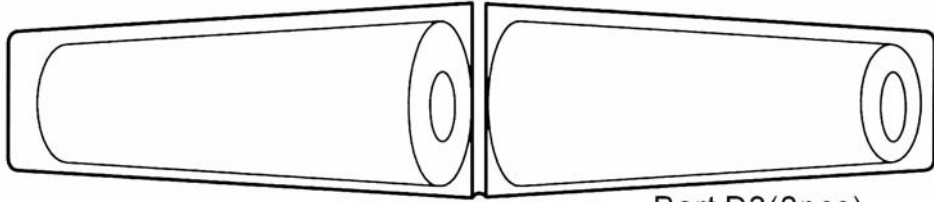
B. Parts Diagrams

Quantities vary according to model purchased. Specifications subject to change without prior notice. For more details on hardware, please see hardware pack page.

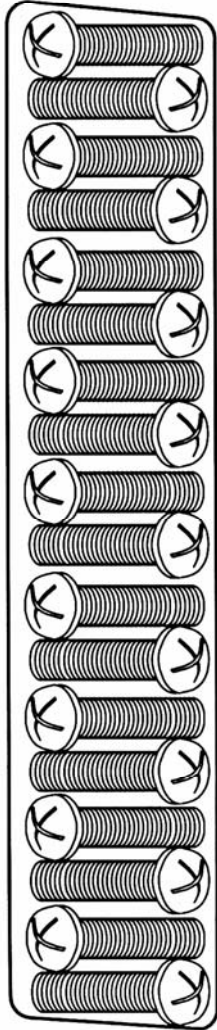


C. Hardware Reference Diagram

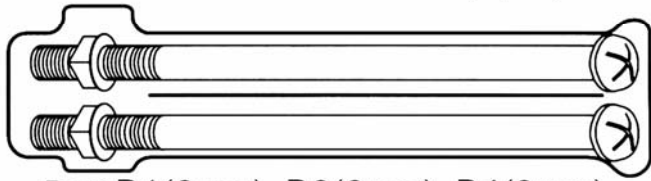
Specifications subject to change without prior notice.



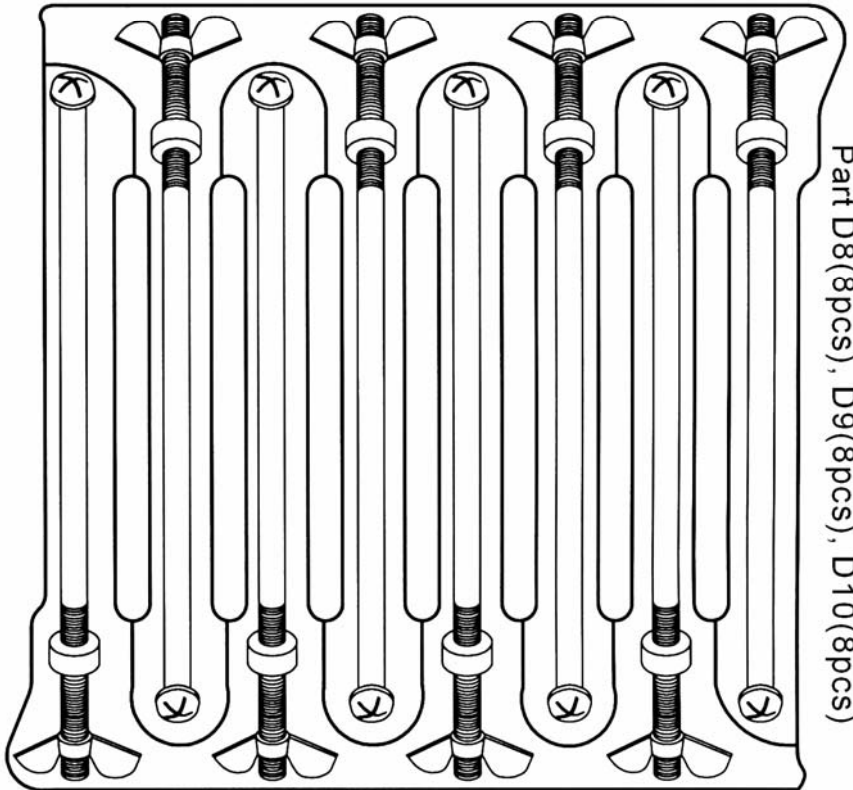
Part D3(2pcs)



Part D7(24pcs)



Part D1(2pcs), D2(2pcs), D4(2pcs)



Part D8(8pcs), D9(8pcs), D10(8pcs)